

MODEL: _____ ITEM: _____
 MAZZER Major Electronic White M03FMJCD1DOEFQQB
 MAZZER Major Electronic Black M03FMJCD1DOEFQQN

Date: _____
 Project: _____
 Location: _____

Produces consistent coffee grinds for any purpose - the ideal choice for small restaurants, sophisticated offices, or the espresso enthusiast's home.



FEATURES

- 83 mm precision flat burrs
- Eye-catching, Professional Design
- Stepless Micro-Metrical Adjustment
- Consistent Dosing by Timer
- Generously Sized Dosing Chamber
- Commercial Grade Steel Flat Grinding Burrs
- Large Capacity Bean Hopper
- Internal Cooling System



Built to last with only top-quality materials



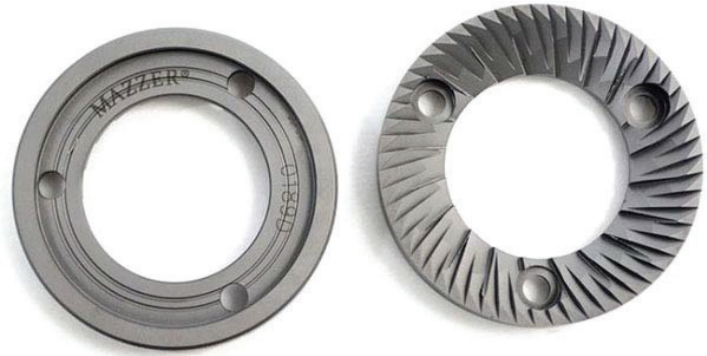
The Mazzer Major is the perfect choice for the medium-high volume commercial environment that does not quite have enough high-volume demands that would require the most powerful models such as the Kony or the Robur.

Mazzer grinders are the de facto industry standard espresso grinders for good reasons – durable construction, grind consistency, tactile dosers, and superbly heavy-duty burrs.



4 lb. capacity bean hopper -

constructed of heavy-duty clear plastic. The large capacity hopper is absolutely essential for efficiency in the high-volume environment to reduce the frequent need for bean refills.



83 MM PRECISION FLAT BURRS

The Mazzer Mini features heavy-duty burr grinding wheels to crush the large quantities of coffee quicker while imparting very little heat to the freshly ground coffee. The cutting wheel is 83 mm in diameter and uses high-grade tempered steel for long life.



Stepless micrometric grind

calibration - capable of very fine adjustments to get the espresso grind just right. Fineness levels can be easily changed using the grind adjustment disc located below the hopper. Turn the grind adjustment disc clockwise to decrease fineness and counterclockwise to increase fineness.

		MAJOR ELECTRONIC
Features		
Output g/s		17/4.7
Hopper capacity (lbs)		4
Diameter burrs (mm)		83
Grind Speed (RPM)		1600
Technical Information		
Dimensions: Width x Depth x Height (mm)		209 x 292 x 635
Weight (lbs)		44
Voltage /RPM	110-120V~60Hz (1ph)	1.6 RPM
Motor Power (w)		650



Euro-Milan Distributing reserves the right to modify the characteristics of the products illustrated in this publication without prior notice for misprints and other errors. There may be colour deviations due to the printing process.

