

MODEL: _____ ITEM: _____
 COMPAK K6 Equipped 64P612 Silver C0264P612

Date: _____
 Project: _____
 Location: _____

Built for the professional barista who demands a **perfect grind with performance and agility.**



FEATURES

- Stepless electronic fineness control
- Runs at 1497 rpm lower and cooler than the competition
- 64 mm flat tempered steel burrs
- 3.75 pound bean hopper capacity
- Capable of 23 - 27 pounds/ hour
- Precision dosing.
- Special competition doser.
- Aluminum lever, fork and doser.
- Built-in 58mm aluminum tamper
- High resistance switch
- 200 Watt motor with overload protection

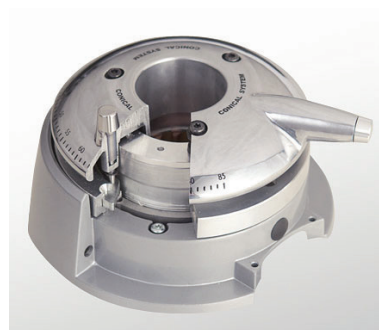


Accurate Dosing

Maximum deviation of + / - 0.2 gr ensures very consistent dose size. Precise dosing.



Featuring precision dosing, the Compak K-6 Equipped coffee grinder is the perfect choice for small batch, perfectly ground coffee.



Continuous micrometric adjustment parallel system

Set the grind point with maximum precision in a very simple and intuitive way. The new Parallel locking system provides an extra level of security ensuring parallel positioning between burrs at all times.



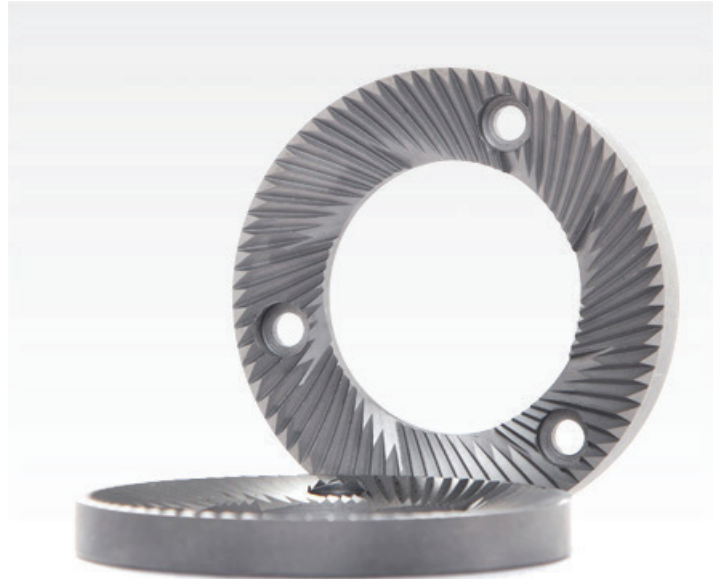
MOTOR 250 W TO 1650 RPM

Powerful motor that allows you to work continuously in situations of high demand, maintaining all the properties of the coffee thanks to the cold grinding at low revolutions.



AUTO-STOP

Auto refill system, ensuring ground coffee ready for service automatically as well as high dosing consistency between shots.



64 MM FLAT BURRS

Ensures accurate particle size for Espresso and spectacular productivity. Special pre-wear treatment is applied to ensure optimal performance from the first use. Durability of 400 Kg.



FULL ALUMINUM DOSER

Full aluminum doser set.



ANALOGIC COFFEE COUNTER

Provides counting control of single shots, till 9999 services.



	K6-EQUIPPED
Features	
Output g/s	7/1.6
Hopper capacity (g)	1700
Diameter burrs (mm)	64
Grind Speed RPM	1395
Technical Information	
Dimensions: Width x Depth x Height (mm)	635x 215 x 40
Weight (lbs)	25
Voltage /RPM	110-120V~60Hz (A) 1100 RPM
Motor Power (w)	200



Euro-Milan Distributing reserves the right to modify the characteristics of the products illustrated in this publication without prior notice for misprints and other errors. There may be colour deviations due to the printing process.

